

2019 ANNUAL REPORT



© 2020 SUM4ALL™

Internet: <http://www.sum4all.org>

Standard Disclaimer

This publication was produced by the Sustainable Mobility for All (SuM4All™) initiative. The rankings, findings, interpretations, and conclusions expressed in this paper do not necessarily reflect the views of the SuM4All member organizations or the governments they represent. SuM4All does not guarantee the accuracy of the data included in this work. The boundaries, colors, denominations, and other information shown on any map in this work do not imply any judgment on the part of SuM4All or its members concerning the legal status of any territory or the endorsement or acceptance of such boundaries.

Rights and Permissions



This work is available under the Creative Commons Attribution 3.0 IGO license (CC BY 3.0 IGO) <http://creativecommons.org/licenses/by/3.0/igo>. Under the Creative Commons Attribution license, you are free to copy, distribute, transmit, and adapt this work, including for commercial purposes, under the following conditions:

Attribution—Please cite the work as follows: Please cite the work as follows: Sustainable Mobility for All. 2020. 2019 Annual Report. Washington DC, ISBN: 979-8-9859982-8-3. License: Creative Commons Attribution CC BY 3.0 IGO

Translations—If you create a translation of this work, please add the following disclaimer along with the attribution: This translation was not created by Sustainable Mobility for All and should not be considered an official Sustainable Mobility for All translation. Sustainable Mobility for All shall not be liable for any content or error in this translation.

Adaptations—If you create an adaptation of this work, please add the following disclaimer along with the attribution: This is an adaptation of an original work by Sustainable Mobility for All. Views and opinions expressed in the adaptation are the sole responsibility of the author or authors of the adaptation and are not endorsed by Sustainable Mobility for All.

Third-party content—Sustainable mobility for All does not necessarily own each component of the content contained within the work. Sustainable Mobility for All, therefore, does not warrant that the use of any third-party-owned individual component or part contained in the work will not infringe on the rights of those third parties. The risk of claims resulting from such infringement rests solely with you. If you wish to re-use a component of the work, it is your responsibility to determine whether permission is needed for that re-use and to obtain permission from the copyright owner. Examples of components can include but are not limited to, tables, figures, or images.

All queries on rights and licenses should be addressed to Sustainable Mobility for All, e-mail: sum4all@worldbankgroup.org.

ISBN: 979-8-9859982-8-3



FROM FRAMING SUSTAINABLE MOBILITY TO ACTION

With the financial support of



TABLE OF CONTENTS

2	In Our Words
4	Who We Are
6	What We Stand For
8	2019 In Retrospect
10	Spotlight
12	Our Impact
16	High-Level Endorsements
18	Looking Ahead
24	ANNEX I: Financial Statements
25	ANNEX II: Governance Structure



IN OUR WORDS

Sustainable Mobility for All (SuM4All) is the premier platform for international cooperation on transport and mobility issues, globally.

Over the past three years, we invested massively in bringing together knowledge and expertise from our 57 Member organizations and in developing tools to assess and guide the journey of all countries around the world toward sustainable mobility.

We now have the foundation to transform the dialogue with countries on the future of mobility and to assist them in their ambition toward the Sustainable Development Goals (SDGs) and the Paris Climate Agreement.

For us, 2019 marked the realization of our most ambitious venture—tackling the “how to” factors to achieve sustainable mobility, and developing the [Global Roadmap of Action toward Sustainable Mobility](#) (GRA). With more than 180 experts involved, 50 country and city decision makers from around the world engaged, and 25 large corporations consulted, the GRA and its seven policy papers represent the most comprehensive effort to identify policies that will deliver on universal access, efficiency, safety, and green mobility.

Thanks to our efforts, the international transport community is now equipped with the most up-to-date knowledge and suite of tools to:

- Measure how far each country is from its ambition of “sustainable mobility”;
- Explore a catalogue of more than 180 policy measures implemented around the world to advance on this ambition;
- Tailor and prioritize policies and investments that are most impactful for a given country, and lay a path forward.

With pilots of the GRA in South Africa and Ethiopia announced, our ambition in 2020 is no less than putting all these knowledge and tools into action and transforming people’s lives. It took vision, leadership and a coalition of actors to get us where we are now, and we are proud to have joined efforts and resources to bring the transport sector up and at par with other universal sectors like energy in a record time.

With the [Global Mobility Report 2017](#), we demonstrated the imperative and urgency to act globally on transport and mobility. The time has arrived to transform the trajectory for transport and work toward a better future for our children.

SuM4All Members

Washington D.C. January, 2020



WHO WE ARE

SuM4All is a global coalition of 57 influential public organizations and private companies with a shared ambition to transform the future of mobility.



Vision

A world where the global mobility system is a catalyst for addressing 21st century global challenges—climate change, global development, poverty reduction, and peace.



Mission

Use the power of our combined voices to transform the global mobility system and achieve sustainable mobility.



Our Focus

- Advocacy: Provide thought leadership to influence global and country decision makers on transport and the future of mobility.
- Action: Support countries in prioritizing the right policies and investments.
- Financing: Create and mobilize finance to achieve sustainable mobility around the globe.



Global Impact

SuM4All has added its voice to a growing network of high-profile organizations such as the Organization for Economic Co-operation and Development (OECD), the International Transport Forum (ITF), Action Toward Climate Friendly Transport (ACT) and the World Economic Forum (WEF) to raise the visibility of the transport sector with solutions to many global issues, including climate change, energy transition to low carbon transport and social stability.



WHAT WE STAND FOR

We believe that accessible, efficient, safe, and green mobility are essential to achieve the Sustainable Development Goals (SDGs) and build a better future for the planet.



UNIVERSAL ACCESS



EFFICIENCY

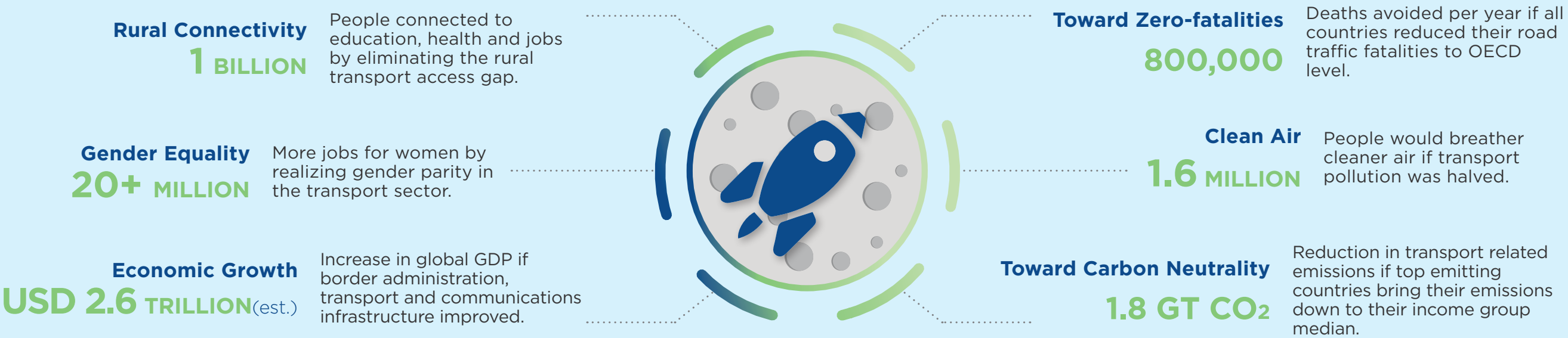


SAFETY



GREEN MOBILITY

Our Moonshot on Sustainable Mobility



Globally, one billion more people would be connected to education, health and jobs if we close the transport access gap in rural areas; improvements in border administration, transport and communication infrastructure could increase global GDP by up to US\$2.6 trillion; and an additional 1.6 billion people would breathe cleaner air if transport pollution was halved.

2019 IN RETROSPECT

**6th Consortium meeting
(Washington, D.C.)**

SuM4All engaged high-level country and city representatives from Argentina and Ecuador.

16th

JANUARY

SuM4All Women Recognized

Nearly one-third of awardees from TUMI's "Remarkable Women in Transport" hold leadership positions under SuM4All.

8th

MARCH

7th Consortium Meeting (Leipzig)

Finalized consultations of the GRA and its six policy papers. Delegates explored new possible thematic priorities for SuM4All over the next 3 years.

23rd

MAY

UNSG Climate Action Summit

SuM4All joined forces to support the “Action Towards the Climate-Friendly Transport” (ACT) Declaration of Intent, taking responsibility for component #1 of the declaration.



23rd

SEPTEMBER

High level launch of the GRA and Online Tool

SuM4All launched the GRA and the Online Tool Toward Sustainable Mobility at the high-level panel participants included country and city representatives from Cote D'Ivoire and Sierra Leone, a former Mayor from Ecuador, and researchers from Ivy League Universities.

23rd

OCTOBER

SuM4All 2017 - 2018 Annual Report

SuM4All published its inaugural annual report covering key moments since its inception.

28th

WBG/IMF Spring Meetings: Future of Mobility

Transport leaders and high-level representatives from Ghana, Kazakhstan and Tajikistan, the European Investment Bank, the Uganda National Roads Authority, and public transport agencies in Washington, D.C. and Barcelona engaged in a conversation on the future of mobility.

11th

Movin' On Summit

SuM4All closed the engagement period on the GRA with a final discussion with the private sector. Consultations with 25 large corporations culminated in the final piece of the GRA, “Contribution of the Private Sector.”



4th-6th

SuM4All Recognized

The Transport Global Practice of the World Bank honored the SuM4All team with the prestigious Knowledge Connectors/Integrators Award.



1st

SPOTLIGHT

180+

Policy measures identified to achieve sustainable mobility



Collective knowledge of over

180 experts



183

countries mapped and able to access best available policy guidance on SDGs and sustainable mobility



25

large corporations covering all the value chain engaged on the draft GRA



50+

Public decision makers from countries and cities consulted on the draft GRA

Six policy papers, one private sector consultations paper and the main GRA; launched on October 23, 2019 in Washington, D.C.



Online Tool Toward Sustainable Mobility 2.0



23

Prime media outlets featured the GRA





External Website

33%

of awardees on the German led TUMI's first ever "Remarkable Women in Transport" list hold leadership positions in SuM4All member organizations



Sum4All Monthly Newsletter

One World Bank 'Knowledge Connectors and Integrators' award in recognition of providing thought leadership and opening up new opportunities for the transport sector internally and externally



Global Tracking Framework 2.0



50,000+

visitors to the SuM4All website since inception



OUR IMPACT

The SuM4All initiative embarked on a challenging effort to answer the question of how countries and cities can attain their Sustainable Development Goals (SDGs) and improve the sustainability of the transport sector. SuM4All is now equipped to engage with policy makers and to pilot the implementation of country action plans with those of South Africa and Ethiopia taking the lead in 2020.

A Global Blueprint to Achieve Sustainable Mobility

SuM4All launched the “Global Roadmap of Action toward Sustainable Mobility” (GRA) in October 2019. The GRA is an ambitious and comprehensive effort to identify the most relevant and impactful policy measures to achieve sustainable mobility. The GRA’s focus on the “how to” emerged as a natural complement to the GMR 2017 that addresses the “what” factors and established the imperative for urgent action on mobility around the world.

The GRA was developed through an iterative process to ensure its relevance and practicality. It represents the best and most up-to-date knowledge on sustainable mobility. It offers prototype action plans with the most impactful policy measures based on actual mobility performances and it is the first-ever effort to determine global blueprints to achieve the four policy goals of sustainable mobility (universal access, efficiency, safety and green mobility) across all modes of transportation. It provides a catalogue of more than 180 policy measures tested around the world. The GRA defines a path forward for countries relative to their own sustainable mobility targets.



An Interactive Decision-Making Tool on Mobility

The launch of the [Online Tool Toward Sustainable Mobility](#) – currently in its version 2.0 – provided policy makers and the international community with a unique platform for decision-making on mobility. It brings together the knowledge from the GMR and the GRA in an interactive and user-friendly interface. It includes three modules:

Module 1 - Mobility performance data

This module of the online tool includes data logged at multiple time periods for roughly 50 country-level, transport- related indicators , covering 180+ countries and all modes of transport.

Module 2 - Catalogue of policy measures

This module examines the more than 180 policy measures to achieve sustainable mobility and determines which policy goals each measure contributes to.

Module 3 - Country action plans

This module uses an algorithm to generate country level prototype action plans comprising policy measures that are most relevant and impactful to a particular country context.

Policy makers have demonstrated strong interest for the Online Tool Toward Sustainable Mobility, recognizing the added value of the policy guidance provided by the prototype action plans.

“...having seen the tool, I can immediately envision on a practical level how policies that we are putting into place can now be challenged, refined and built on.”

~ Yvonne Aki Sawyer,
Mayor of Freetown, Sierra Leone



Standardized Mobility Diagnostics

The launch of mobility performance of country profiles for 183 countries marked a significant milestone in the ongoing effort by SuM4All to continuously upgrade the existing transport Global Tracking Framework (GTF) and refine the way mobility diagnostics are performed. The profiles, which are freely available on the SuM4All website, include all the transport related indicators from the online tool.

SuM4All defined three key metrics as part of the mobility diagnostic:

Sustainability Rating

A grading system that clusters countries into groups based on mobility performances.



“The opportunity that we see in the GRA is that the assessment has told us where we are as a country and now, it is about seeing our plans and how we reprioritize some of them [to achieve sustainable mobility].”

- Boitumelo Mosako, Chief Financial Officer, Development Bank of Southern Africa

Sustainable Mobility Ranking

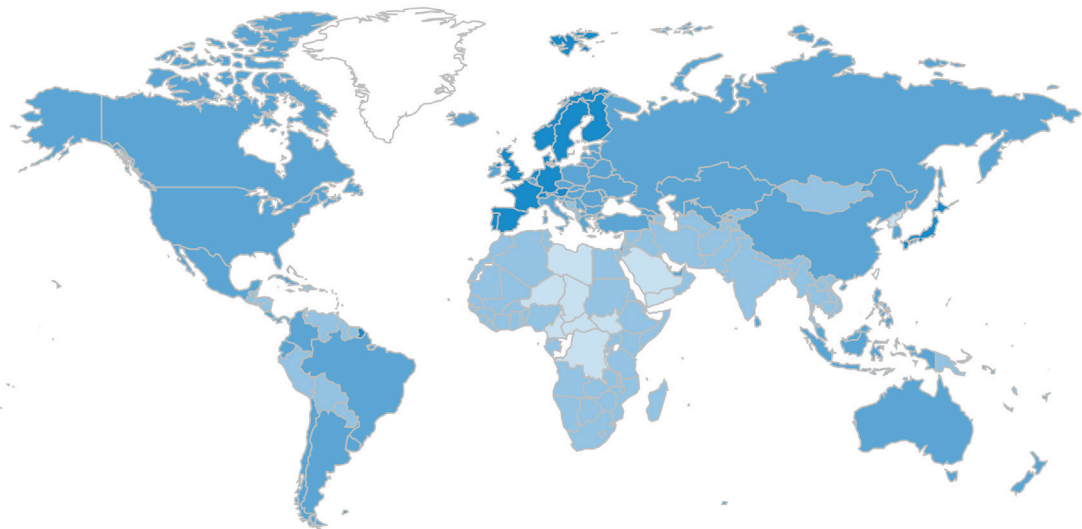
An assignment of positions based on a country’s performances along what we coined as the “Sustainable Mobility Index”.

Sustainability Gap

A multifaceted assessment of a country’s mobility performance, relative to the global champions, regional benchmarks, income group benchmarks or their own historical performances.

The country-level performance evaluation—particularly the sustainable mobility ranking—has motivated countries to do better on their mobility performance.

The color coded map shows performance on all modes of transport for 183 countries, based on an index that combines the four policy goals: universal access, efficiency, safety, and green mobility.



0 (the darker the color the closer to sustainable mobility, white = no data) 100

source: www.sum4all.org/online-tool



HIGH-LEVEL ENDORSEMENTS



"Initiatives such as Sustainable Mobility for All are helping transform 'ideas and common sense' into evidence and action. The recently-launched policy toolkit Global Roadmap of Action Towards Sustainable Mobility helps countries do just that."

~ **Makhtar Diop,**
Infrastructure Vice President,
World Bank



"What I saw in [SuM4all] is accountability and commitment. That is why things have happened and why this [initiative] has gone beyond ambition but [now it] is really about action...what is really exciting for us as a country is to be the first beneficiary of this work."

~ **Boitumelo Mosako,**
Chief Financial Officer,
Development Bank of Southern Africa



"We need cleaner, safer and more efficient transport systems... The Sum4All initiative brings together all voices, and helps strengthening our capacities to work hand in hand with national and local governments to create more opportunities for future generations."

~ **Luis Carranza,**
Executive President, Development
Bank of Latin America



"Sustainable mobility is a comprehensive and integral issue and I think that Sustainable Mobility for All is properly addressing it. It is a great step in the right direction."

~ **Hon. Mauricio Rodas Espinel,**
Former Mayor of Quito, Ecuador



"All that we are doing [in Argentina] is consistent with this vision [of Sustainable Mobility for All] that we are discussing today, to have transport that is more accessible, greener, safer and more efficient."

~ **H. E. Guillermo Dietrich,**
Minister of Transport, Argentina



"With the GRA we have finally and for the first time, a clear vision that can be translated into immediate action. We look forward to working with countries and industry on a new and impactful pipeline of projects."

~ **Susanna Zammataro,**
Director General,
International Road Federation (IRF)



"The challenge is to achieve more mobility, for more people, with less impact. In this sense, the GRA is a real milestone. It is an operational toolbox that will help States and Cities improve the sustainability of their own transport sector."

~ **Florent Menegaux,**
Chief Executive Officer, Michelin



"Sustainable Mobility for All represents a unique global alliance of key transport stakeholders which together can make a real difference."

~ **Karen Vancluysen,**
Secretary General
POLIS Network

LOOKING AHEAD

SuM4All will continue to build its seminal global role and technical track record on transport and mobility. In 2020, it will scale up its investment in global knowledge, with a focus on advanced technology and engineering solutions for the future of mobility. In addition, it will move from advocacy to action by engaging country and city decision makers in a new conversation on mobility using the GRA as its guiding policy framework.



Global Advocacy and Thought Leadership

SuM4All will take an active role in major high-level global events related to transport with a view to increase the visibility of the GRA and other tools like the Global Tracking Framework. The aim is to continue to influence global decisions on mobility, by investing in global knowledge and shaping global agendas.

1. Global Advocacy - Anchored Events

3rd Global Ministerial Conference on Road Safety: Achieving Global Goals 2030, February 19–20, Sweden

This event complements the official pre-event to the [3rd Ministerial Conference on Road Safety](#) held during the 8th SuM4All consortium meeting on January 15 in Washington D.C.

United Nations Secretary General 2nd Global Conference on Sustainable Transport, May 5–7, China.

SuM4All will play a major role in helping shape the UN Secretary General’s Conference on Sustainable Transport for Heads of State, contributing to the official conference report (UN Inter-Agency Report on Sustainable Transport) and taking the lead in several sessions on regulation and transport data. The 9th SuM4All Consortium meeting will also be held during the conference in China.

COP 26: 2020 United Nations Climate Change Conference, November 9–19, United Kingdom.

SuM4all will contribute to transport day, with specific focus on green mobility and the GRA.

International Transport Forum 2020 Summit: Transport Innovation for Sustainable Development, May 27–29, Germany.

Steering committee members will act as SuM4All ambassadors at ITF, using the event to promote partnerships and engage with the GRA.

Other events

- The 82nd session of the United Nations Economic Commission for Europe Inland Transport Committee: Environmental Challenges to Sustainable Inland Transport from February 25–28 in Switzerland.
- United Nations Conference on Trade and Development: Climate Change, SIDS and Maritime Transport on October 19 in Barbados.
- Movin’On Summit from June 3–5 in Montreal.

2. Global Tracking Framework 2.0

Expansion and data update of the multi-agency global dashboard with more than 100 country level transport-related indicators to track countries progress toward accessible, efficient, safe, and green mobility. This effort will also involve the production of country mobility- performance-at-a-glance snapshots for over 180 countries that factor all modes of transport.

3. Data, Indicators and Methodologies

As delineated in the GMR 2017, the need to invest in development of additional indicators and refinement of existing ones for the transport sector remains. Efforts will be directed toward developing methodologies and expanding data coverage for existing transport-related SDG indicators. We will also help develop additional indicators that quantify the link between transport and sustainable development.

4. SuM4All Impact Stories: Video Blog Series

The series introduces an interactive and descriptive way that allows discussions about sustainable mobility with global leaders, experts, sustainable mobility champions and pioneers within the transport sector. They answer one question in 60 seconds with a concise, engaging and comprehensive message.

5. Two SuM4All Consortium meetings

Convergence of members to achieve sustainable mobility with a first meeting held in Washington D.C on January 15, 2020. The second meeting will be held in May in China.

ACTION

SuM4all will launch five new workstreams in 2020 under the leadership of its member organizations: enabling data sharing for sustainable urban mobility; sustainability of the e-mobility model; the transport energy nexus; gender data, and country pilots of the GRA. All these workstreams will use the catalogue of policy measures in the GRA as their backdrop. Additionally, elections for a new Steering Committee will be held in April 2020.

1. **Workstream One: Enabling Data Sharing for Urban Sustainable Mobility**

This workstream brings leading stakeholders from public, private, academic and NGO sectors together to formulate actionable policy guidance for the creation of data sharing models for transport applications in specific local geographies and help shape national-level regulations on the topic.

2. **Workstream Two: Gender Data**

Interventions and measures can be taken to improve women's mobility. Many are cross cutting in nature, and few alone will deliver gender sensitive transport. The global transport community has an important role to play to build an evidence base that underpins the complete sustainable mobility framework. This workstream will therefore support further work on gender and transport data collection.

3. **Workstream Three: Sustainability of the E-Mobility Model**

This workstream aims to increase an understanding of sustainability considerations in the broader field of electric mobility. It will seek to increase international cooperation in this field and reduce institutional uncertainty at all levels of government (global, national, city) and in financial institutions to promote electric mobility.

4. **Workstream Four: Energy and Mobility**

This workstream will provide policy guidance that shapes regulatory structures and business practices to support synergies between the energy and mobility sectors especially in the urban context through improved access and efficient use of energy.

5. **Workstream Five: Piloting the GRA**

This workstream will pilot the use of the GRA in at least two countries in 2020 and assist them in their transition toward the SDGs and sustainable mobility. For SuM4All, these pilots will also help refine the online tool diagnostic and enrich the catalogue of measures with guidance on how to make those measures more actionable. It will also contribute to fulfill the commitment made by SuM4All

at the Climate Action Summit 2019 through the ACT Declaration (component #1 – implementation of country actions).

6. **Steering Committee Election**

The term of the incumbent Steering Committee will expire on July 1, 2020. Elections to appoint a new Steering Committee for a two-year term will be held in April 2020. Related milestones include: annual review of SuM4All membership, revisions of the SuM4All Charter and terms of reference for the Steering Committee.

FINANCING

1. **Mobilizing additional financing for sustainable mobility**

As part of the GRA pilot, SuM4All will seek to develop a strong pipeline of country projects to achieve sustainable mobility that can be financed by multilateral development banks, bilateral organizations, governments, private sector and other financiers (e.g., Green Climate Fund).

2. **New funding**

SuM4All will continue to expand its donor bases to support the implementation of its work program. We would like to invite new organizations to join the group of current contributors to this platform and invest seed funding in this platform. We have a three-year work program ready to implement.





ANNEX I: FINANCIAL STATEMENTS

Table 1: Total Financial Flows US\$ ‘000), 2019

Funding Source	World Bank	BMZ	Michelin Foundation	FIA	SDG Fund	Other Members
Amount	665	358	97	55	30	In Kind

Note: Financial Flows were used to finance output (the Global Roadmap of Action and its policy papers; the Global Tracking Framework 2.0; and the Online Tool Toward Sustainable Mobility), events, communication and administrative costs.

Table 2: Total Financial Flows (US\$ ‘000), 2017-2018

Funding Source	World Bank	BMZ	Other Members
Amount	1094	350	In Kind

PAST AND PRESENT FUNDERS



ANNEX II: GOVERNANCE STRUCTURE

■ Consortium

The SuM4All consortium consists of the 57 Member organizations that have pledged to a shared vision on sustainable mobility and agreed to work together toward its implementation.

Member organizations perform the following roles and responsibilities:

- Actively participate and contribute in kind to the initiative via one or more relevant technical working groups and the two consortium meetings held each year;
- Implement gender equality as an integral part of their membership;
- Promote SuM4All work and accomplishments at their events and in their communication material.

■ Steering Committee

As part of our commitment to establish a diverse, inclusive and representative steering committee, SuM4All consortium members elected their representatives for a two-year term, starting July 1, 2018.

The current steering committee is composed of 15 seats, whose objectives are to:

- Commit to position sustainable mobility as a top priority in the global development agenda;
- Enhance coordination and collaboration among Members;
- Encourage the exchange of knowledge and best practices.

Entities represented on the steering committee are expected to make a financial or in-kind contribution during their tenure to help meet the costs of running SuM4All and producing its outputs.

■ Members of the Steering Committee



Benjamin Jeromin

German Federal Ministry for
Economic Cooperation and
Development (BMZ)

Seat: Donor



Colin Gourley

Department for International
Development (DFID)

Seat: Donor



Guangzhe Chen

World Bank
Seat: Multilateral Development Bank



Joseph Haule

Research for Community Access
Partnership (ReCAP)

Seat: Working Group Lead -
Universal Access Rural



Philip Turner

Union Internationale des Transports
Publics (UITP)

Seat: Working Group Lead -
Universal Access Urban



Sheila Watson

FIA Foundation
Seat: Working Group Lead -
Gender



Nicolás Estupiñán

Banco de Desarrollo de
America Latina (CAF)
Seat: Multilateral Development Bank



Maruxa Cardama

Partnership on Sustainable Low
Carbon Transport (SLoCaT)
Seat: Civil Society



Susanna Zammataro

International Road Federation (IRF)
Seat: Civil Society



George Georgiadis

United Nations Economic
Commission for Europe (UNECE)
Seat: Working Group Lead -
Efficiency



Nhan Tran

World Health Organization (WHO)
Seat: Working Group Lead - Safety



Sergio Avelleda

World Resources Institute (WRI)
Seat: Working Group Lead -
Green Mobility



Nicolas Beaumont

Michelin
Seat: Private Sector



Andrew Mckellar

Fédération Internationale de
l'Automobile
Seat: Private Sector



Jan Hoffmann

United Nations Conference on Trade
and Development (UNCTAD)
Seat: UN Agencies

■ Secretariat

The Secretariat is housed at the World Bank. It performs both a thought-leadership function and a logistical and administrative function for the SuM4All initiative. More precisely, the secretariat:

- Provides strategic and technical leadership for the initiative;
- Proposes work program. It devises and supports processes and content to implement;
- Facilitates the delivery and production of products;
- Produces and manages the SuM4All website;
- Coordinates and delivers outreach activities;
- Provides content and coordinates logistics for monthly steering committee and consortium meetings;
- Fundraises with other steering committee members and administers financial resources (through the Mobility and Logistics Multi-Donor Trust Fund).

■ Members of the Secretariat



Nancy Vandycke

Program Manager



Emiye Deneke

Program Assistant



Alejandra Gutierrez

Communications and
Engagement Officer



Shokraneh Minovi

Partnerships



Javier Morales Sarriera

Research and Data



Gurpreet Singh Sehmi

Research and Data



Mary Ngaratoki Fabian

Research and Data

SuM4All is the **premier platform** for
international cooperation on issues related
to transport and **sustainable mobility**.
With a coalition of **57** public and private
organizations, we share the ambition to
transform the future of mobility.



for inquiries contact
sum4all@worldbankgroup.org



visit our website
www.sum4all.org



join the conversation on
#SuM4All



join our linked in group
**Sustainable Mobility for All
(SuM4All)**